

**VISIT SITE NOW >>**

## Self-Priming Pump 6-inch 173-HP

Universal Configuration: Trailer or Skid

MODEL #	
6-inch DSP/HD 6000 173-HP Self Priming Pump	

OPERATING LEVELS	
Min Flow	450 GPM
Max Flow	2500 GPM
Head Range	Up to 200 ft
Discharge Size	6 inches
Suction Size	8 inches
Solids Handling	Solids up to 5 inches
Max Speed	1800 RPM
Percent Solids	Up to 40-70% Solids
Production Rate	150-200 yd <sup>3</sup> /hr



\*Typical Deployment Photo. Dredge pumps can be deployed vertically or horizontally. Photos for general guidance. Contact us for further details.

PARTS	STANDARD MATERIALS
Rotor	High Chrome (EddyChrome) - other materials available
Volute Casing	High Chrome (EddyChrome) - other materials available
Shaft	Chromoly or Stainless Steel
Mechanical Seal	Dual Tungsten Carbide with Self Contained Seal Flushing System
Bearing Housing	Ductile Iron

ENGINE SPECS
<ul style="list-style-type: none"> <li>• 173-HP (129 kW) Diesel Engine Tier IV (Tier III International) - 2200 RPM</li> <li>• Liquid Cooled, 12 Volt Power In-Line 4 Cycle Turbo Charge Diesel</li> <li>• Electronic Fuel System</li> <li>• ECU w/ de-rates and shutdowns</li> <li>• Estimated Fuel Consumption - 10.3 GPH</li> <li>• Dimensions - 195 inch (Length) x 81 inch (Width) x 98 inch (Height)</li> </ul>

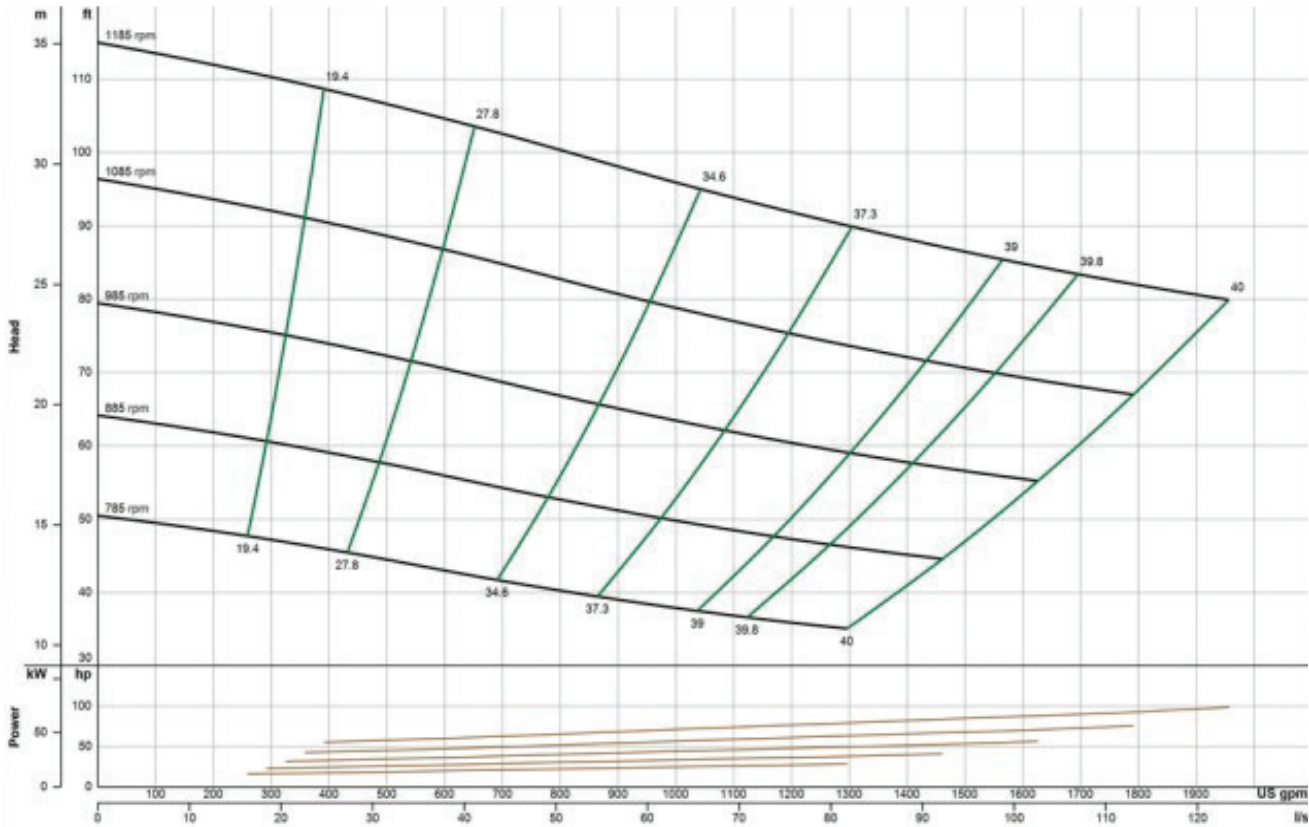
**We pump up to 70% solids, not water.**

**VISIT SITE NOW >>**

**PUMP CURVE**

A pump curve is a graphical representation of a pumps ability to produce flow against a certain head. The science is matching a curve that is accurate for your project, leading to the proper pump selection and best efficiency. **EDDY Pumps** are primarily used for high solids, slurry, sludge, and dewatering.

**EDDY Pump - Self-Priming Pump 6-inch 173-HP - Pump Curvez**



\*General pump curve based on water at 1200 RPM. Contact us with your specific material for a custom pump curve.

**CONTACT US**



**(619) 258-7020**



**info@EddyPump.com**