

VISIT SITE NOW >>

Self-Priming Pump 6-inch 115-HP

Universal Configuration: Trailer or Skid

MODEL #	
6-inch DSP/HD 6000 115-HP Self Priming Pump	

OPERATING LEVELS	
Min Flow	450 GPM
Max Flow	2500 GPM
Head Range	Up to 200 ft
Discharge Size	6 inches
Suction Size	8 inches
Solids Handling	Solids up to 5 inches
Max Speed	1800 RPM
Percent Solids	Up to 40-70% Solids
Production Rate	150-200 yd ³ /hr



*Typical Deployment Photo. Dredge pumps can be deployed vertically or horizontally. Photos for general guidance. Contact us for further details.

PARTS	STANDARD MATERIALS
Rotor	High Chrome (EddyChrome) - other materials available
Volute Casing	High Chrome (EddyChrome) - other materials available
Shaft	Chromoly or Stainless Steel
Mechanical Seal	Dual Tungsten Carbide with Self Contained Seal Flushing System
Bearing Housing	Ductile Iron

ENGINE SPECS
<ul style="list-style-type: none"> • 115-HP (86 kW) Diesel Engine Tier IV (Tier III International) - 2200 RPM • Liquid Cooled, 12 Volt Power In-Line 4 Cycle Turbo Charge Diesel • Electronic Fuel System • ECU w/ de-rates and shutdowns • Estimated Fuel Consumption - 10.3 GPH • Dimensions - 195 inch (Length) x 81 inch (Width) x 98 inch (Height)

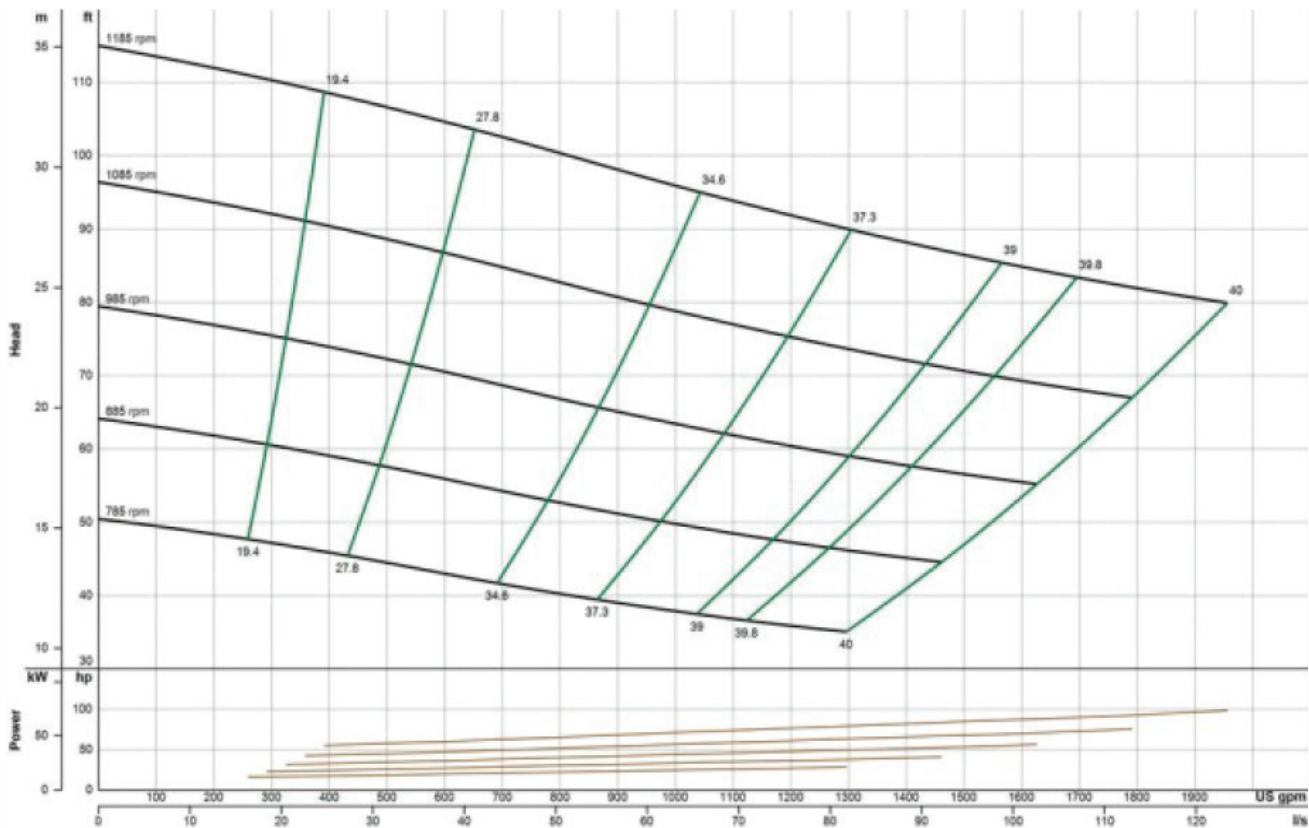
We pump up to 70% solids, not water.

VISIT SITE NOW »

PUMP CURVE

A pump curve is a graphical representation of a pumps ability to produce flow against a certain head. The science is matching a curve that is accurate for your project, leading to the proper pump selection and best efficiency. **EDDY Pumps** are primarily used for high solids, slurry, sludge, and dewatering.

EDDY Pump - Self-Priming Pump - 6-inch 115-HP - Pump Curve



*General pump curve based on water at 1200 RPM. Contact us with your specific material for a custom pump curve.

CONTACT US



(619) 258-7020



info@EddyPump.com