

**VISIT SITE NOW >>**

## Self-Priming Pump 12-inch 700-HP

Universal Configuration: Trailer or Skid

MODEL #	
DSP-12000 with 700-HP Diesel Engine	

OPERATING LEVELS	
Min Flow	2600 GPM
Max Flow	7300 GPM
Head Range	Up to 180 ft
Discharge Size	12 inches
Suction Size	14 inches
Solids Handling	Solids up to 11 inches
Max Speed	900 RPM
Percent Solids	Up to 40-70% Solids
Production Rate	500-600 yd <sup>3</sup> /hr



\*Typical Deployment Photo. Dredge pumps can be deployed vertically or horizontally. Photos for general guidance. Contact us for further details.

PARTS	STANDARD MATERIALS
Rotor	High Chrome (EddyChrome) - other materials available
Volute Casing	High Chrome (EddyChrome) - other materials available
Shaft	Chromoly or Stainless Steel
Mechanical Seal	Dual Tungsten Carbide with Self Contained Seal Flushing System
Bearing Housing	Ductile Iron

ENGINE SPECS
<ul style="list-style-type: none"> <li>• 700-HP (522 kW) Diesel Engine Tier IV (Tier III International) - 2200 RPM</li> <li>• Liquid Cooled, 12 Volt Power In-Line 4 Cycle Turbo Charge Diesel</li> <li>• Electronic Fuel System</li> <li>• ECU w/ de-rates and shutdowns</li> <li>• Dimensions - 195 inch (Length) x 81 inch (Width) x 98 inch (Height)</li> </ul>

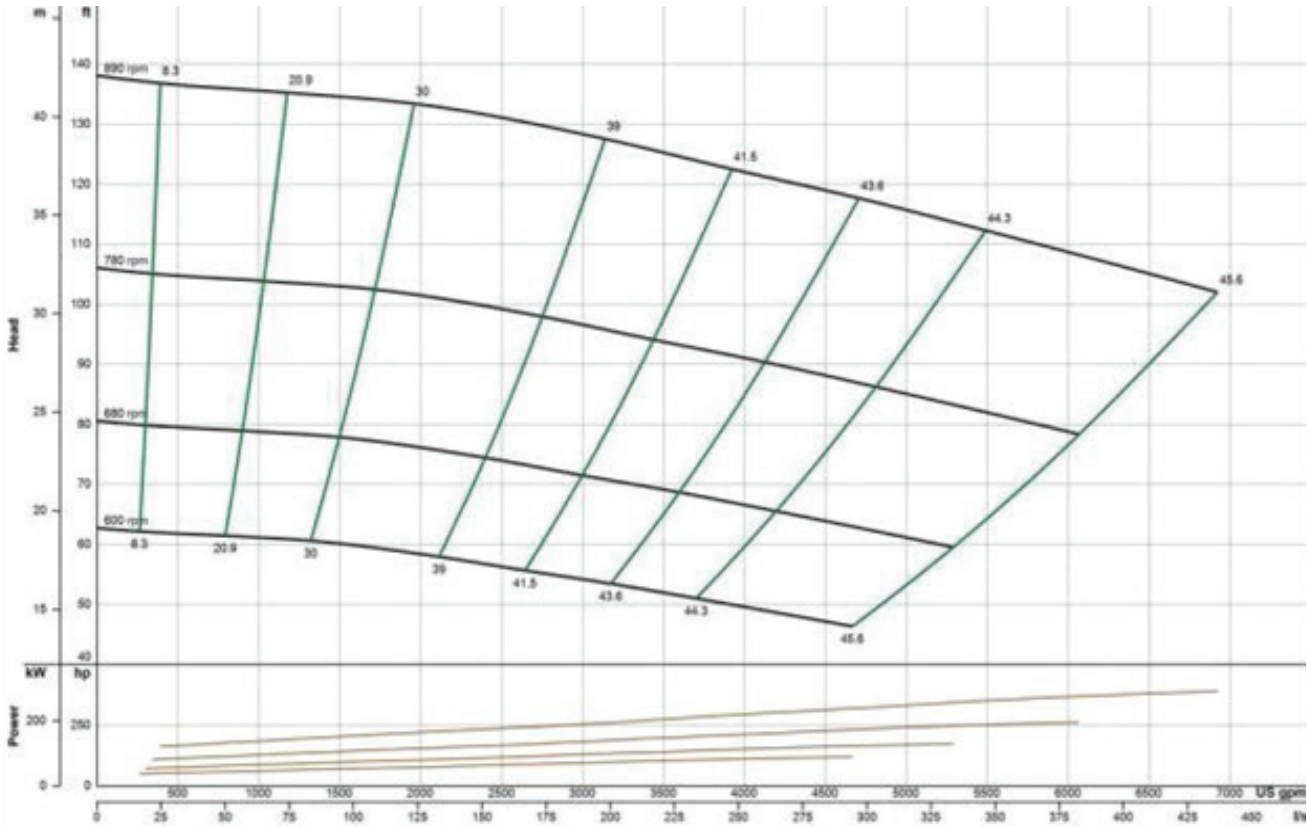
**We pump up to 70% solids, not water.**

**VISIT SITE NOW >>**

**PUMP CURVE**

A pump curve is a graphical representation of a pumps ability to produce flow against a certain head. The science is matching a curve that is accurate for your project, leading to the proper pump selection and best efficiency. **EDDY Pumps** are primarily used for high solids, slurry, sludge, and dewatering.

**EDDY Pump - Self-Priming Pump 12-inch 700-HP - Pump Curve**



\*General pump curve based on water with 1200 RPM motor. Contact us with your specific material for a custom pump curve.

**CONTACT US**



**(619) 258-7020**



**info@EddyPump.com**