

**VISIT SITE NOW >>**

## Self-Priming Pump 10-inch 550-HP

Universal Configuration: Trailer or Skid

MODEL #	
DSP-10000 with 550-HP Diesel Engine	

OPERATING LEVELS	
Min Flow	1600 GPM
Max Flow	5000 GPM
Head Range	Up to 240 ft
Discharge Size	10 inches
Suction Size	12 inches
Solids Handling	Solids up to 9 inches
Max Speed	1200 RPM
Percent Solids	Up to 40-70% Solids
Production Rate	300-350 yd <sup>3</sup> /hr



\*Typical Deployment Photo. Dredge pumps can be deployed vertically or horizontally. Photos for general guidance. Contact us for further details.

PARTS	STANDARD MATERIALS
Rotor	High Chrome (EddyChrome) - other materials available
Volute Casing	High Chrome (EddyChrome) - other materials available
Shaft	Chromoly or Stainless Steel
Mechanical Seal	Dual Tungsten Carbide with Self Contained Seal Flushing System
Bearing Housing	Ductile Iron

ENGINE SPECS
<ul style="list-style-type: none"> <li>• 550-HP (410 kW) Diesel Engine Tier IV (Tier III International) - 2200 RPM</li> <li>• Liquid Cooled, 12 Volt Power In-Line 4 Cycle Turbo Charge Diesel</li> <li>• Electronic Fuel System</li> <li>• ECU w/ de-rates and shutdowns</li> <li>• Dimensions - 195 inch (Length) x 81 inch (Width) x 98 inch (Height)</li> </ul>

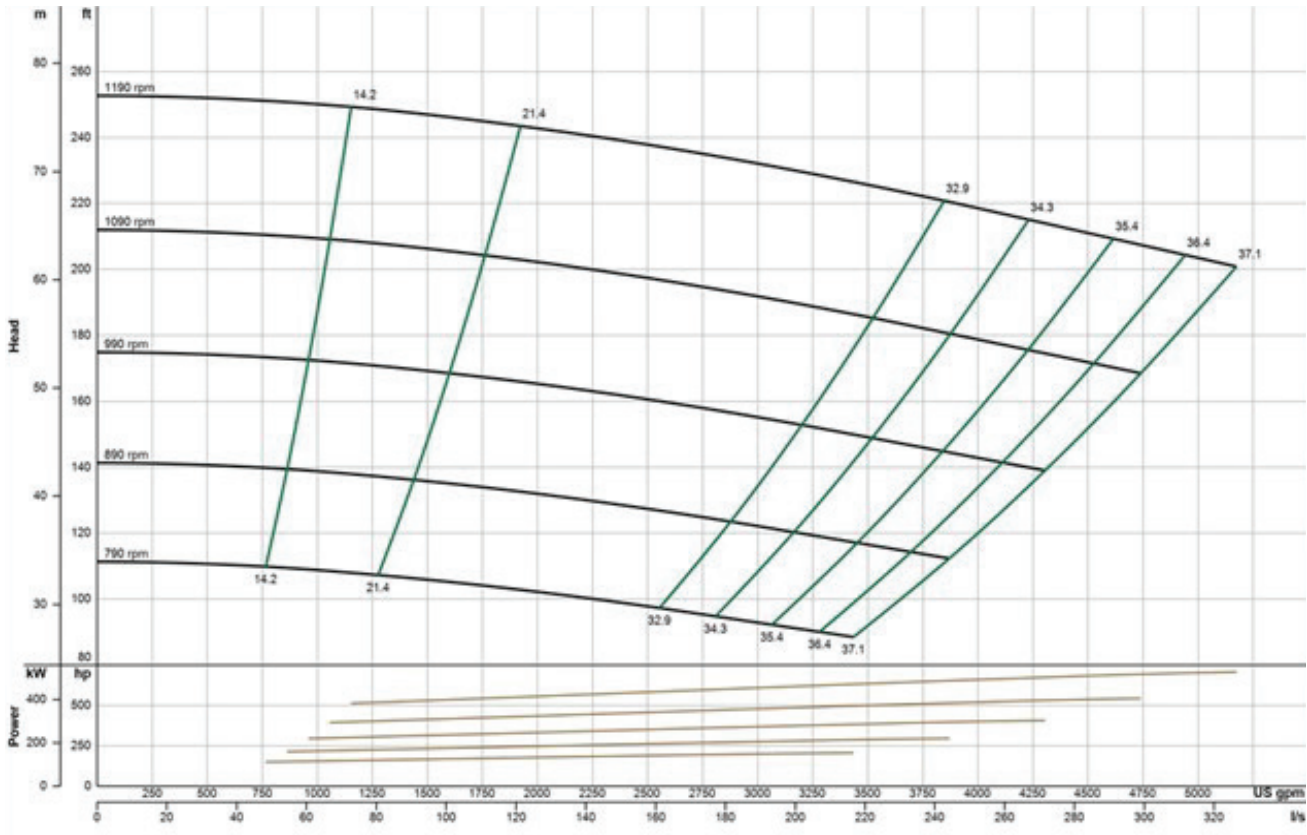
**We pump up to 70% solids, not water.**

**VISIT SITE NOW »**

## PUMP CURVE

A pump curve is a graphical representation of a pumps ability to produce flow against a certain head. The science is matching a curve that is accurate for your project, leading to the proper pump selection and best efficiency. **EDDY Pumps** are primarily used for high solids, slurry, sludge, and dewatering.

**EDDY Pump - Self-Priming Pump 10-inch 550-HP - Pump Curve**



\*General pump curve based on water with 1200 RPM motor. Contact us with your specific material for a custom pump curve.

**CONTACT US**



**(619) 258-7020**



**info@EddyPump.com**