

## Remote/Autonomous Dredge - 6 Inch (AD-6000)

MODEL #	
AD-6000	
OPERATING LEVELS	
MIN FLOW	450 GPM
MAX FLOW	2000 GPM
HEAD RANGE	Up to 200 ft
DISCHARGE SIZE	6 inch
SUCTION SIZE	8 inch
SOLIDS HANDLING	Solids up to 5 inches
MAX SPEED	1800 RPM
PERCENT SOLIDS	Up to 40-70% Solids
CU YD MATERIAL HR	150-200



\*Typical Attachment Photo. Photos For General Guidance. Contact Us For Further Details.

### INCLUDED EQUIPMENT

- 6-inch High Chrome EDDY Pump with 250-hp Electric Motor or 250-hp Diesel Engine
- 75-hp HPU (Hydraulic Power Unit)
- Floating Dredge
- Cutterhead or Auger
- Shore-Mounted Pilot House with Controls

### REQUIRED EQUIPMENT TO OPERATE

- 6-inch DAE Slurry hose and Floats
- If going with the electric option, a generator or power source is needed

### OPTIONAL EQUIPMENT TO ENHANCE OPERATION OF DREDGE

- Wireless Doppler Flow Meter
- RTK/GPS System for Precision Real-time Dredging

**EDDY Pump dredges** are equipped with non-clog pumps designed for high solids industrial pumping applications. Our patented pump technology outperforms all centrifugal, vortex and positive displacement pumps in a variety of the most difficult pumping applications.

Available in alternative power options and pump sizes depending on your application.

Applications	Features and Benefits	Fluid Pumped
<ul style="list-style-type: none"> <li>• Mining (Mineral Recovery)</li> <li>• Lagoon Dredging</li> <li>• Sand &amp; Agg</li> <li>• Shallow Industrial Ponds</li> <li>• Dams</li> <li>• Fly Ash &amp; Coal Ash</li> </ul>	<ul style="list-style-type: none"> <li>• Non-Clog, High Viscosity, High Specific Gravity, High Abrasives, Low pH Pumping Design</li> <li>• Transport 40-70% Solids</li> <li>• Ability to pump objects of up to 9-inches in diameter</li> </ul>	<ul style="list-style-type: none"> <li>• Sludge</li> <li>• Slurry</li> <li>• Bio-Sludge</li> <li>• Mine Tailings</li> <li>• Minerals</li> <li>• Sand Mixtures</li> </ul>

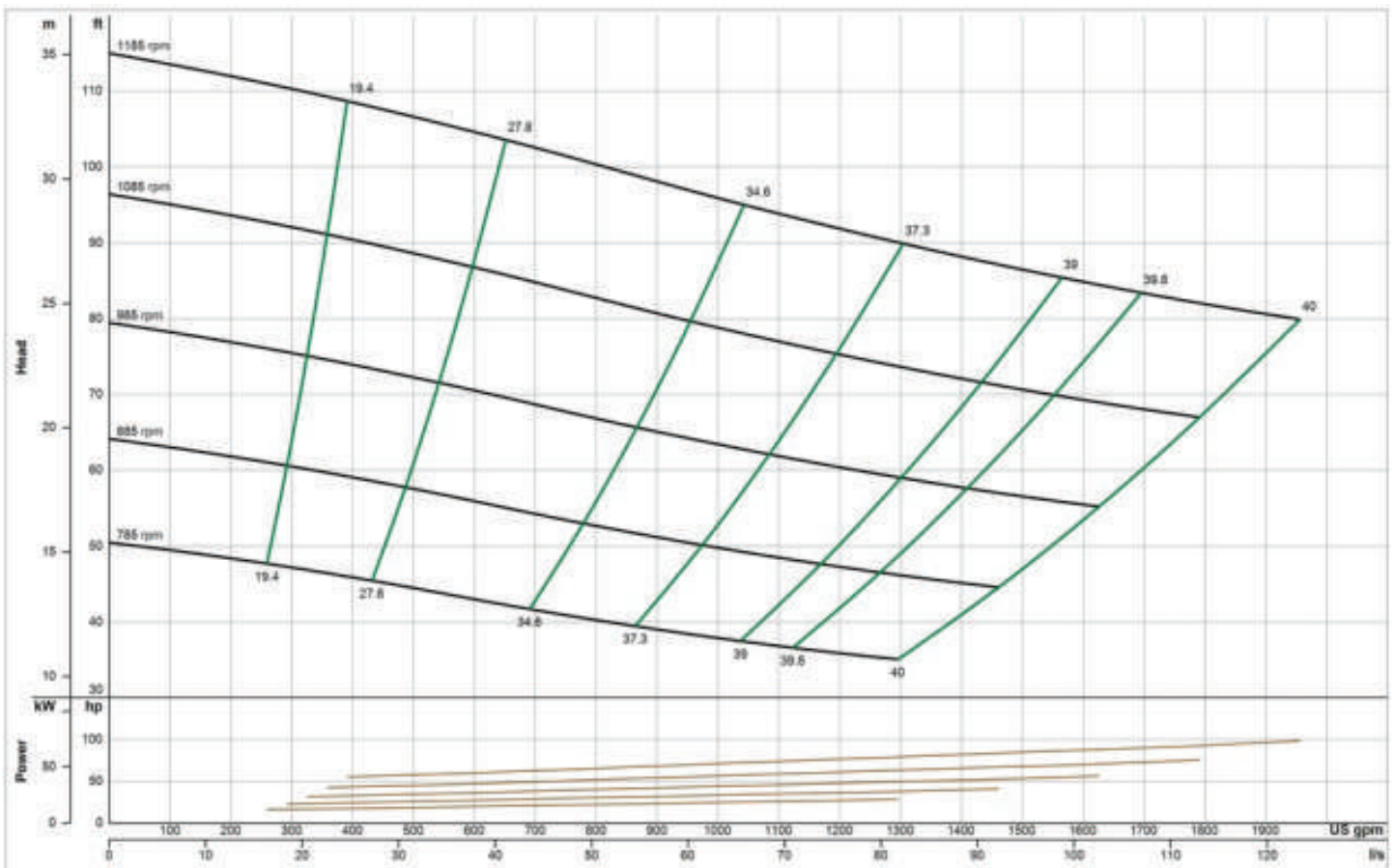
GENERAL SPECS		
Head with 250hp Motor or Engine	Up to 200 feet	60 m
Overall Weight	25,000 lbs	11,339 kg
Overall Length	35 feet	10.6 m
Overall Height	8 feet	2.4 m
Overall Width	12 feet	3.6 m
Standard Operating Depths	30 feet	9.1 m

## PUMP CURVE

A pump curve is a graphical representation of a pumps ability to produce flow against a certain head. The science is matching a curve that is accurate for your project, leading to the proper pump selection and best efficiency.

**EDDY Pumps** are primarily used for high solids, slurry, sludge, and dewatering

**EDDY Pump - 6 Inch HD 6000 - Heavy Duty Slurry Pump - Pump Curve**



\*General pump curve based on water at 1200 RPM. Contact us with your specific material for a custom pump curve.

## WE PUMP SOLIDS, NOT WATER

**CONTACT US**



**(619) 258-7020**



**info@EddyPump.com**