

VISIT SITE NOW »

Electric Cable Deployed Pump with Water Jetting Agitator 10-inches

MODEL

10-inches JPE 10000 Cable Deployed Pump with Jetting Ring

OPERATING LEVELS

Min Flow	1200 GPM
Max Flow	5000 GPM
Head Range	Up to 200 ft
Discharge Size	10 inches
Suction Size	12 inches
Solids Handling	Solids up to 9 inches
Max Speed	1800 RPM
Percent Solids	Up to 40-70% Solids
CU YD Material HR	300-350
Dredging Depth	Up to 100 ft

RECOMMENDED SENSORS

Wireless Doppler Flow Meter
RTK/GPS System for precision real-time dredging

REQUIRED EQUIPMENT TO OPERATE ATTACHMENT

10-inches DAE Slurry hose
Generator and VFD to power a 450 Hp motor

OPTIONAL EQUIPMENT TO ENHANCE OPERATION OF DREDGE

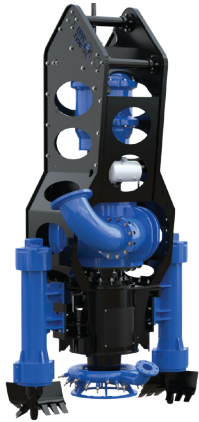
Doppler Wireless Slurry Flow Meter
Discharge line pressure gauge (0-150 psi)
"Quick Prime" Valve (requires small 24-volt air system)
Pivot mounted discharge hose carrier (adaptable to most machines)
Cable Hung Unit can convert to be compatible with Liner Safe Roller Attachment and Self Cleaning Mud Guard
Recirculation system for pre-mixing applications (requires small 24-volt air system)



*Typical Deployment Photo. Dredge pumps can be deployed vertically or horizontally. Photos for general guidance. Contact us for further details.

We pump up to 70% solids, not water.

VISIT SITE NOW »



Electric Cable Deployed Pump with Water Jetting Agitator 10-inches is a non-clog pump designed for high solids industrial pumping applications. Our patented pump technology outperforms all centrifugal, vortex and positive displacement pumps in a variety of the most difficult pumping applications. Increase or decrease water flow and adjust jetting pattern to suit your project demands. Available in alternative power options and pump sizes depending on your application.

Available in alternative power options and pump sizes depending on your application.

Applications

- Barge Unloading
- Deep Water Dredging
- Mining
- Sand & Agg
- Oil & Gas
- Fly ash & Coal Ash

Features and Benefits

- Non-Clog, High Viscosity, High Specific Gravity, High Abrasives, Low pH Pumping Design
- Transport 40-70% Solids
- Ability to pump objects of up to 10-inches in diameter

Fluid Pumped

- Sludge
- Slurry
- Drilling Mud
- Mine Tailings
- Grit
- Sand Mixtures

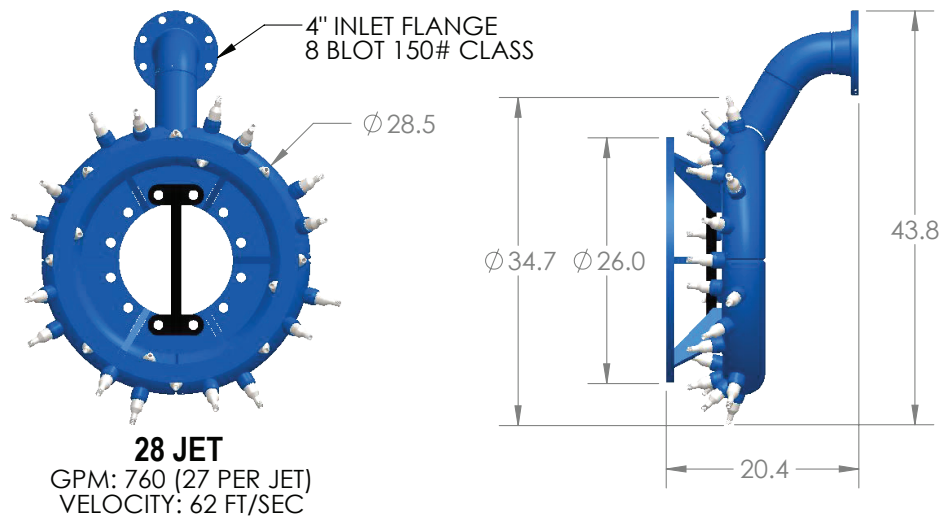
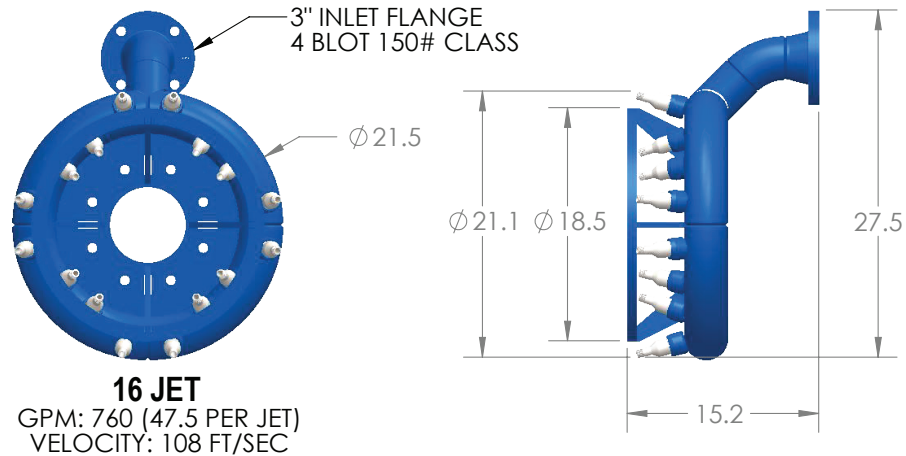
GENERAL SPECS

Production: 1200-5000 GPM or 300-350 cubic yards of material per hour		
Head with 450 Hp motor	Up to 200 feet	Up to 61 m
Overall Weight (without optional equipment)	7,500 lbs	3,400 kg
Overall Length	154 inches	3.9 m
Overall Height	48 inches	1.2 m
Overall Width with discharge pipe removed	46 inches	1.17 m
Overall Width with discharge pipe mounted (right side)	57 inches	1.45 m
Carrier Weight Range	60-94 tons	54,400-85,000 kg
Standard Jetting Ring Diameter	36 inches	0.91 m
Double seal with Sealed Barrier fluid tank (allow dry run)	3.5 inches	89 mm

We pump up to 70% solids, not water.

VISIT SITE NOW >>

JETTING RING HEAD SPEC SHEET



REPLACEMENT
JETTING NOZZLE

**GPM & VELOCITY CALCULATION BASED ON
4" CENTRIFUGAL WATER PUMP, 760 GPM WITH 81' HEAD

SIZE	JETS	PART #
EXF4K	16	16025
EXF6K, EXF8K, EXF10K	28	12882

The information contained in this drawing is the sole property of Eddy Pump Corporation.
Any reproduction in part or as a whole without the written permission of Eddy Pump Corporation is prohibited.

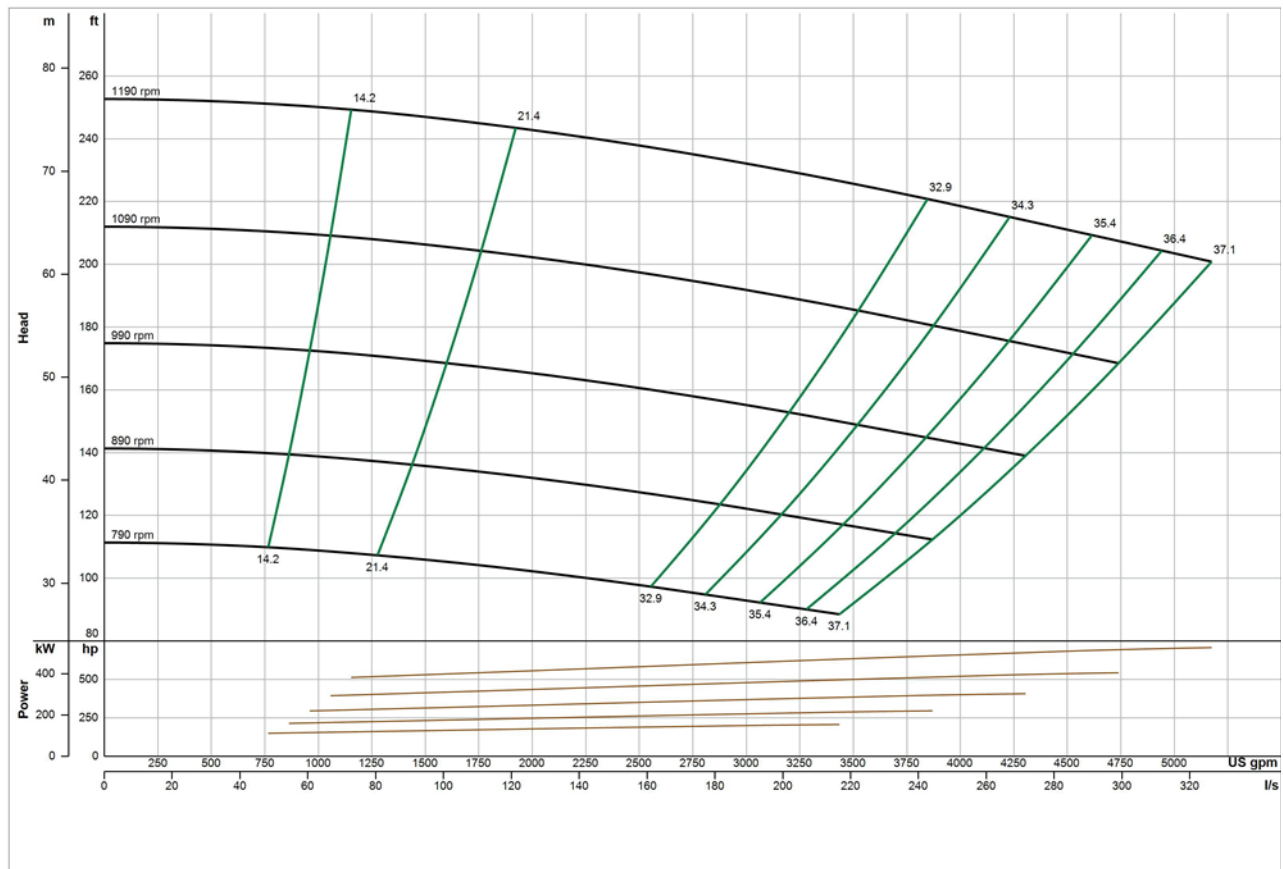
We pump up to 70% solids, not water.

VISIT SITE NOW »

PUMP CURVE

A pump curve is a graphical representation of a pumps ability to produce flow against a certain head. The science is matching a curve that is accurate for your project, leading to the proper pump selection and best efficiency. **EDDY Pumps** are primarily used for high solids, slurry, sludge, and dewatering.

EDDY Pump - Electric Cable Deployed Pump with Water Jetting Agitator 10-inches - Pump Curve



*General pump curve based on water with 900 RPM motor. Contact us with your specific material for a custom pump curve.

CONTACT US



(619) 258-7020



info@EddyPump.com