

Hydraulic Excavator Pump Attachment - 4 Inch

| MODEL # | |
|--|--|
| 4-Inch EXF 4000 Hydraulic Excavator Attachment | |

| OPERATING LEVELS | |
|------------------|------------------------------------|
| MIN FLOW | 250 GPM |
| MAX FLOW | 1200 GPM |
| HEAD RANGE | Up to 160 ft |
| DISCHARGE SIZE | 4 inch |
| SUCTION SIZE | 6 inch |
| SOLIDS HANDLING | Solids up to 3 inches |
| MAX SPEED | 1800 RPM |
| PERCENT SOLIDS | Up to 40-70% Solids |
| PRODUCTION RATE | 75-150 yd ³ material/hr |



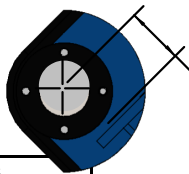
*Typical Attachment Photo. Photos for general guidance. Contact us for further details.

| RECOMMENDED SENSORS |
|--|
| Hydraulic Pressure Gauge for pumps and cutter head circuit to operator (0-6000 PSI) |
| Magnetic Flow meter to maintain stable plug free pipeline flow and maximize production |

| REQUIRED EQUIPMENT TO OPERATE ATTACHMENT |
|--|
| EDDY Pump circuit requirements from excavator auxiliary power OR from Hydraulic Power Unit 35 GPM at 5000 PSI (80cc motor) |
| Cutterhead circuit requirements from excavator auxiliary power OR from Hydraulic Power Unit 12-18 GPM at 5000 PSI (1340cc motor) |
| 6" material handling discharge hose and hydraulic lines plumbed out to the end of the boom |
| Crossover check valve to prevent damage to hydraulic motor and prevent pump rotor from coming off |
| Minimum excavator carrier weight requirements: 20-45 tons / 18,000-40,000 kg |

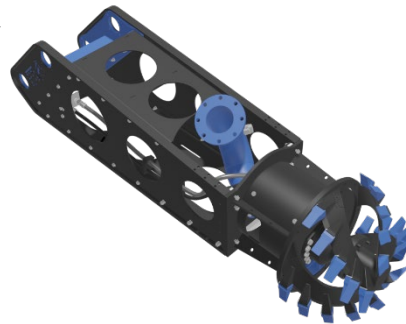
MAXIMUM LINKAGE CROSS SECTION

[114mm]
4.5in



| STANDARD SIZING | |
|-----------------|----------|
| PART # | SIZE |
| 01425 | Ø 80 MM |
| 12877 | Ø 90 MM |
| 06661 | Ø 100 MM |
| 01042 | Ø 110 MM |

*CUSTOM SIZES AVAILABLE UPON REQUEST



(EXF4K Frame, Elbow Discharge, Cutterhead ONLY No Pump)





EDDY Pump industrial Excavator Dredge Pump Attachments are non-clog pumps designed for high solids industrial pumping applications. Our patented pump technology outperforms all centrifugal, vortex and positive displacement pumps in a variety of the most difficult pumping applications. Available in alternative power options and pump sizes depending on your application.

APPLICATIONS

- Mining
- Chemical
- Sand & Agg
- Oil and Gas
- Paper & Pulp
- Fly Ash & Coal Ash

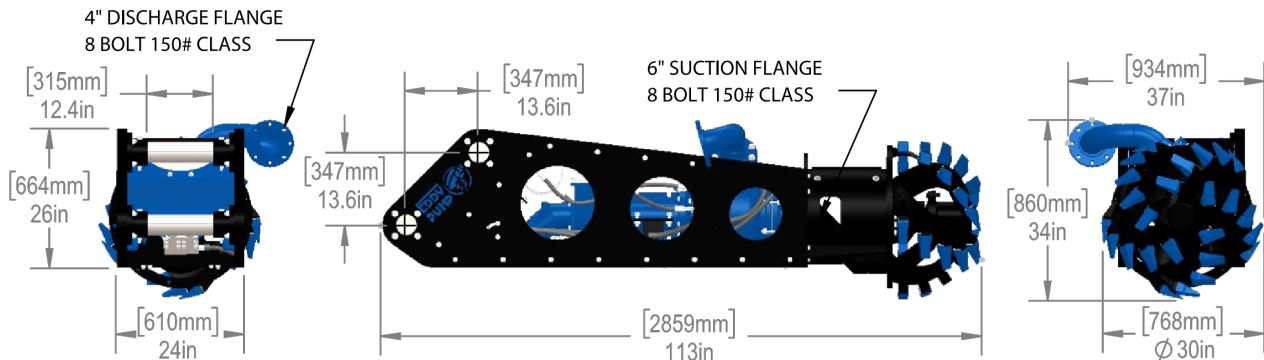
FEATURES & BENEFITS

- Non-Clog, High Viscosity, High Specific Gravity, High Abrasives, Low pH Pumping Design
- Transport 40-70% Solids
- Ability to pump objects of up to 9-inches in diameter

APPLICATIONS

- Sludge
- Slurry
- Drilling Mud
- Mine Tailings
- Grit
- Sand Mixtures

| GENERAL SPECS | | |
|---|-----------|----------|
| Overall Weight (without optional equipment) | 3,300 lbs | 1,496 kg |
| EXF4K Frame, Discharge Elbow and Cutterhead | 1,700 lbs | 771 kg |





OPTIONAL EQUIPMENT TO ENHANCE OPERATION OF DREDGE

Magnetic flow meter

Discharge line pressure gauge (0-150 psi)

"Quick Prime" Valve (requires small 24volt air system)

Pivot mounted Discharge hose carrier (adaptable to most machines)

Recirculation system for pre-mixing applications (requires small 24-volt air system)



STANDARD CUTTER HEAD



SELF-CLEANING HEAD



WATER JETTING RING



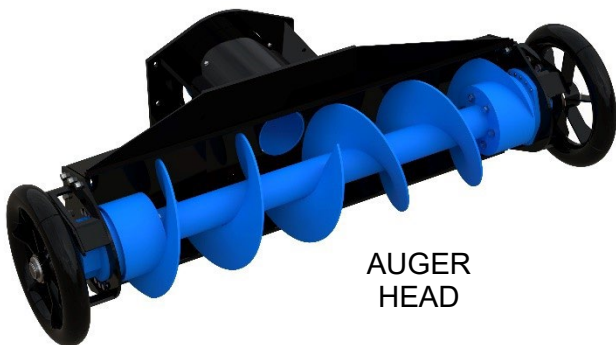
LINER-SAFE WHEELS



EXTENDED CUTTER HEAD



RE-CIRCULATION



AUGER HEAD

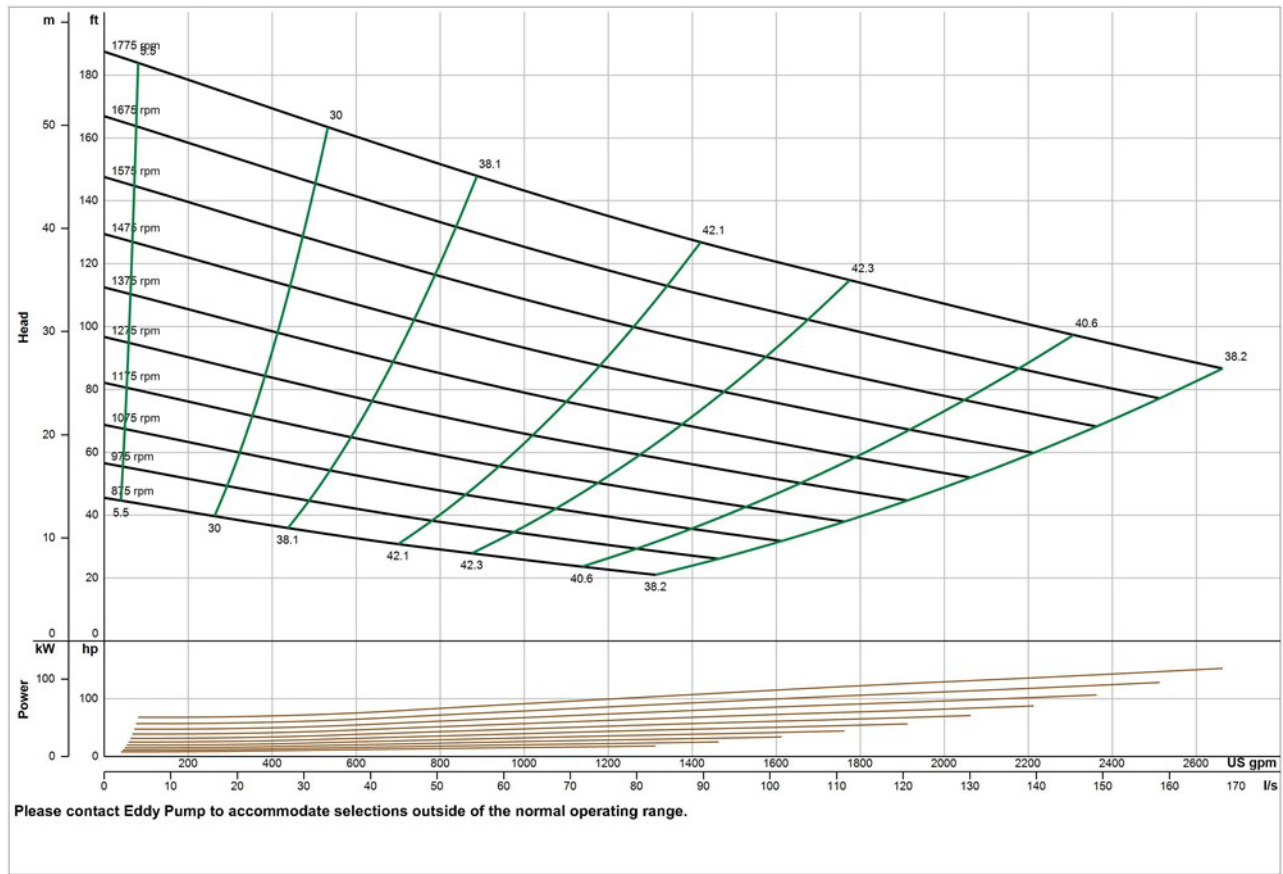


MIXER HEADS

PUMP CURVE

A pump curve is a graphical representation of a pumps ability to produce flow against a certain head. The science is matching a curve that is accurate for your project, leading to the proper pump selection and best efficiency. **EDDY Pumps** are primarily used for high solids, slurry, sludge, and dewatering.

EDDY Pump - 4 Inch HD 4000 Heavy Duty Slurry Pump - Pump Curve



*General pump curve based on water with 1200 RPM motor. Contact us with your specific material for a custom pump curve.

WE PUMP SOLIDS, NOT WATER

CONTACT US



(619) 258-7020



info@EddyPump.com