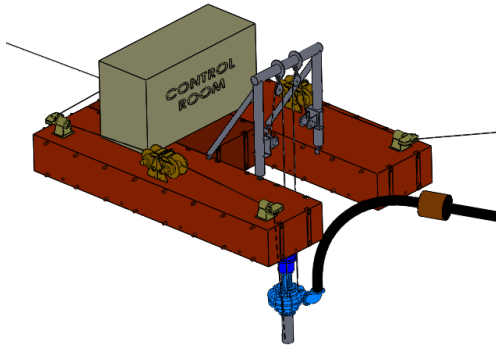


## Eddy Pump Corporation

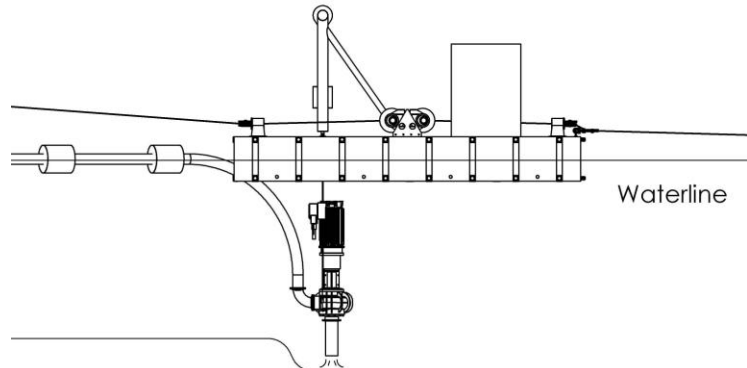
Eddy Pump has been bringing new innovative solutions to the aging dredge industry since 1987. Building on their popular autonomous submersible dredge technology, Eddy Pump engineers have developed yet another ground breaking product, the AD10K.



### The AD10K

The AD10K, is a fully automated dredge with a footprint of only 650 sq. ft. By anchoring 3 to 4 cables on land, the AD10K can effectively dredge a large area without any onboard crew.

The AD10K uses an array of electronic instrumentation to control the four onboard winches to literally pull itself along a predefined dredging path, raise and lower the pump, and regulate pump RPM. Due to the cable-based pump deployment, the AD10K can dredge up to 100 ft.

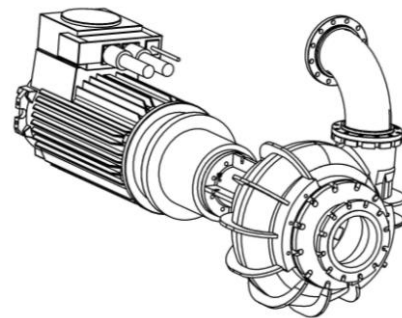


### HD10000

At the heart of the AD10K is the 10 inch Eddy Pump, the HD10000. This pump can move slurry up to a rate of 4000 GPM at over 400 ft of head.

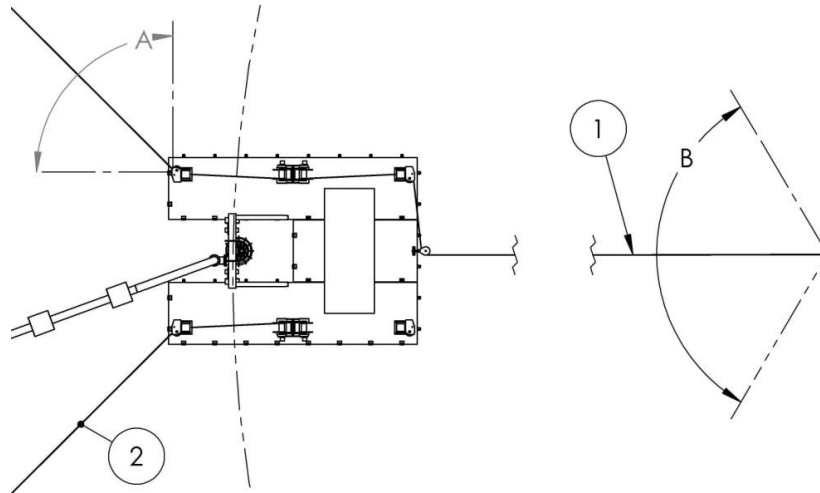
All Eddy Pumps are uniquely engineered to outperform their competitors. Unlike alternative pumps, the Eddy Pump is optimized for:

- High Production
- High Concentration Solids
- High Viscosity and Specific Gravity Fluids
- High Abrasive and Corrosive Materials
- Low Ownership Cost



All while featuring a non-clogging design to minimize machine downtime. For a detailed list of additional benefits the Eddy Pump provides, visit [www.EddyPump.com](http://www.EddyPump.com).

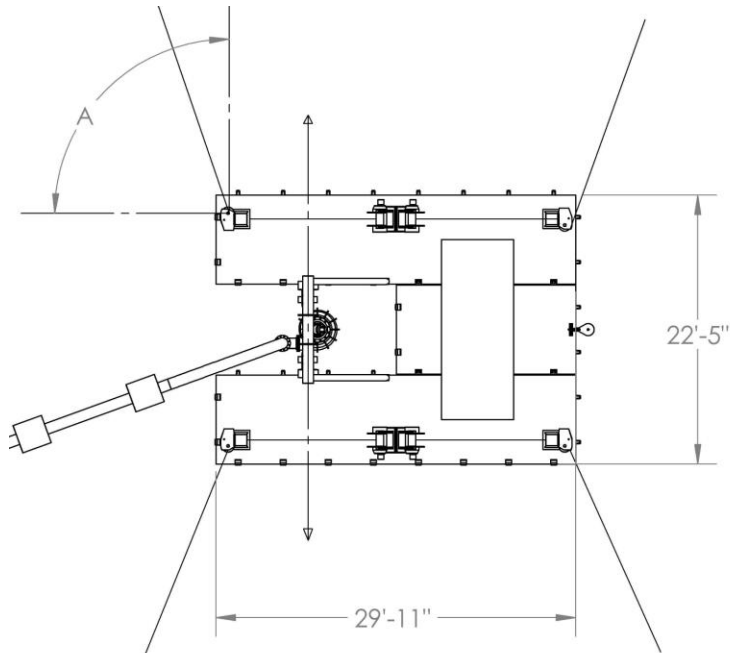
### Three Wire System



A	Operation Angle *
B	Pivot Angle *
1	Pivot Cable
2	Winch Cable

\* Angle range is dependent on kinematics of each cables anchor points

### Four Wire System (Optional)



A	Operation Angle *
---	-------------------

\* Angle range is dependent on kinematics of each cables anchor points.

## Specifications

### Operational Data

Assembled Weight	23 – 32	metric tonne	25 -35	short tons
Max Digging Depth	30.5	m	100	ft
Power Required	373 - 411	kW	500 - 550	HP
Dredge Swing	Variable*			

### Pump

Model	(1) Eddy Pump HD10000			
Max Flow (Slurry Material)	15141	lpm	4000	gpm
400 HP 460 V 3 Phase Submersible Motor				
Max Head	121.9	m	400	ft

### Barge

Barge	(2) Flexifloat H50 Quad (1) Flexifloat H50 Duo			
Configuration	U - Configuration			
Effective Length	9.1	m	30.0	ft
Effective Width	6.8	m	22.4	ft
Effective Height	1.2	m	3.8	ft
Barge Weight	17.9	metric tonne	39400	lbs
Buoyant Capacity @ 65% Draft	22.2	metric tonne	24.5	short ton

### Positioning Winch System

Winch	(4) TWG Pullmaster M12 - Large Drum			
Required Rope	1/2" Dynema Rope			
Fairlead Model	(4) Smith Berger MD-16			
Winch Drum Capacity	500	m	1640	ft

### Hoist System

Winch Model	(2) TWG Pullmaster M12 - Standard Drum			
Required Rope	1/2" Dynema Rope			
Winch Drum Capacity	500	m	1640	ft

### Jetting Ring System

Manufacturer	Unspecified			
Electric Power Required	37 - 56	kW	50	HP
Water Flow Required	1136 - 1893	lpm	300 -500	GPM
Water Pressure Required	344 - 1034	kPa	50 - 150	psi

### Electric Hydraulic Power Unit

Manufacturer	Unspecified			
Motor	37 - 56	kW	50 - 75	HP
Approximate Weight	455	kg	1000	lbs

\* Angle range is dependent on kinematics of each cables anchor points.