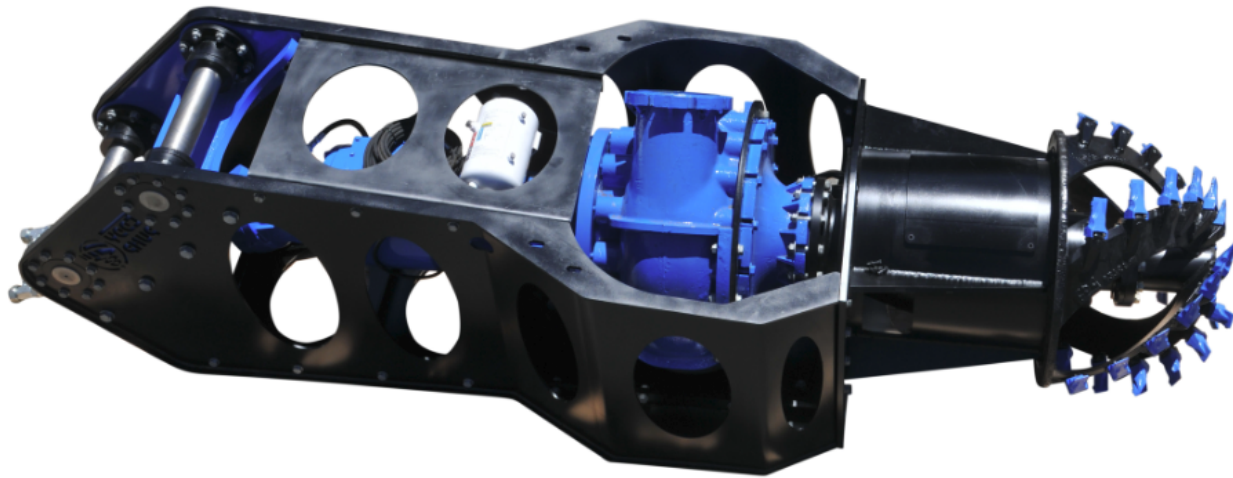


# EDDY PUMP® 8000 High Solids Slurry Pump Excavator Attachment



8" Heavy Duty Eddy Pump, Max. Slurry Flow rate	15,140 lpm	3,200 gpm
Max head with 350cc hydraulic motor (21" rotor) 110 gpm oil @500PSI	47 m	155 feet
Max head with 500cc hydraulic motor (23" rotor) 165 gpm oil @500PSI	100-120 m	350-400 feet
Overall Weight (without optional equipment)	3,372 kg	6,935 lbs
Overall Length	3.9 m	154 inch
Overall Height	1.2 m	48 inch
Overall Width with discharge pipe removed	1.17 m	46 inch
Overall Width with discharge pipe mounted (right side)	1.45 m	57 inch
Carrier Weight Range	54,400-85,000 kg	60-94 tons
Rotating Head Diameter (with or without cutting teeth)	.90 m	35 inch
Double seal with Sealed Barrier fluid tank (allow dry run)	89 mm	3.5"

## Recommended Sensors

Hydraulic Pressure Gauge for pump and cutter head circuit visible to operator (0-6000 psi)
Magnetic Flow meter to maintain stable plug free pipeline flow and maximize production

## Required Equipment to operate Attachment

Combined hydraulic circuit (both pumps) on excavator capable of 110-165 GPM at 5000 PSI (355cc motor)
Auxiliary hydraulic valve to operate cutter head capable of 14-20 GPM at 5000 PSI (continuous) one-way
8" material handling discharge hose and hydraulic lines plumbed out to the end of the boom
Crossover check valve to prevent damage to hydraulic motor and prevent pump rotor from coming off

## Optional Equipment to enhance operation of dredge

Magnetic flow meter
Discharge line pressure gauge (0-150 psi)
"Quick Prime" Valve (requires small 24volt air system)
Pivot mounted Discharge hose carrier (adaptable to most machines)
Recirculation system for pre-mixing applications (requires small 24 volt air system)
Liner Safe Roller Attachment

